



LSO

# AUTUMN 2021

September to December

**barbican**

Resident  
Orchestra

**London Symphony Orchestra**

# WELCOME

**'If ever any of us were in danger of taking one chord of a piece for granted, that has gone. The past months have allowed us to admit how much we desperately need music, and that we are meant to have an audience there to hear it. That's one of many reasons we are thrilled to be performing these works in London, and look forward to sharing them with you.'**

**Sir Simon Rattle OM CBE**  
**LSO Music Director**

## **Welcome from Kathryn McDowell**

I am delighted to share with you details of the London Symphony Orchestra's Autumn season from September to December 2021, for which we are looking forward to being in our Barbican home, where the LSO is Resident Orchestra.

The LSO's return to the Barbican in May this year was a wonderful and truly uplifting occasion. We were thrilled to be reunited with our audiences once again, and it was heartening to know that the performances we shared digitally during the pandemic were enjoyed by so many.

In these first months of the LSO's 2021/22 season, we will be joined by our family of conductors: Music Director Sir Simon Rattle, whose projects include an all-British programme to open the season, a new exploration of Bruckner's Fourth Symphony; and Principal Guest Conductors François-Xavier Roth and Gianandrea Noseda.

Highlights throughout the season include an Artist Portrait with violist Antoine Tamestit, featuring concertos with the orchestra and a chamber series of BBC Radio 3 Concerts at LSO St Luke's; the world premiere of a new choral and orchestral work by Julian Anderson; a new work for Magdalena Kožená by

Ondřej Adámek; a new concerto from Sally Beamish for violinist Janine Jansen and clarinettist Martin Fröst; and a unique collaboration with the jazz saxophonist and composer Soweto Kinch.

Our Half Six Fix performances continue, offering the chance to explore one piece of music in a more relaxed setting, with introductions from the conductor. You can enjoy chamber music at LSO St Luke's in our BBC Radio 3 Concerts and LSO Discovery Friday Lunchtime Concerts. And we will also continue to release a programme of digital concerts that can be streamed at-home on YouTube and through our broadcast partners; please visit our website at [Iso.co.uk](http://Iso.co.uk) for the latest details.

As we look forward to the season ahead, I would like to take this opportunity to thank all those who have supported the LSO so loyally and so generously over the last 18 months. I hope that you will find much to enjoy in our Autumn season, and I look forward to welcoming you to a concert very soon.

**Kathryn McDowell CBE DL**  
**Managing Director**

# Season Concerts



Magdalena Kožená and Sir Simon Rattle

**Sunday 12 September** 7–9.20pm  
**Barbican**

## SEASON LAUNCH: NEW MUSIC BRITAIN

**Purcell** Remember not, Lord,  
our offences  
**Tippett** Praeludium  
**Julian Anderson** Two movements  
from 'Exiles' (world premiere)\* †  
**Judith Weir** Natural History †  
*Interval*  
**Vaughan Williams**  
A Pastoral Symphony †  
**Maxwell Davies** An Orkney Wedding,  
with Sunrise ‡

**Sir Simon Rattle** conductor  
**Lucy Crowe** soprano †  
**Robert Jordan** bagpipes ‡  
**Simon Halsey** chorus director  
**London Symphony Chorus**

Generously supported by **DnaNudge**  
and **Art Mentor Foundation Lucerne**.



**ART FOUNDATION  
MENTOR LUCERNE**

\* Commissioned by the London Symphony  
Orchestra, London Symphony Chorus, Boston  
Symphony Orchestra and Bayerischer Rundfunk.

*Please note, all finish times are  
approximate. Please check [iso.co.uk](http://iso.co.uk)  
in the week before the concert for  
more information.*

**Wednesday 15 September** 6.30–7.30pm  
**Barbican**

## HALF SIX FIX: BEETHOVEN 6

A different way to experience the LSO,  
with introductions to the music from  
the conductor, a relaxed atmosphere,  
and digital programme notes.

**Beethoven** Symphony No 6, 'Pastoral'

**Sir Simon Rattle** conductor

**Thursday 16 September** 7–8.45pm  
**Barbican**

## ONDŘEJ ADÁMEK & BEETHOVEN

**ONDŘEJ Adámek** Where are You?  
(UK premiere)\*

*Interval*

**Beethoven** Symphony No 6, 'Pastoral'

**Sir Simon Rattle** conductor  
**Magdalena Kožená** mezzo-soprano

Generously supported by  
**Art Mentor Foundation Lucerne**.

**ART FOUNDATION  
MENTOR LUCERNE**

\* Composed for Musica Viva / Bayerischer Rundfunk  
and the London Symphony Orchestra, supported by  
the **Ernst von Siemens Music Foundation**.



**Sunday 19 September** 7–9pm  
**Barbican**

## 6 BRUCKNER'S JOURNEY TO THE 'ROMANTIC' SYMPHONY

In Sir Simon Rattle's words, 'Bruckner's  
Fourth Symphony constantly changed  
shape over an extraordinary 16 years.'  
In this concert, Rattle conducts a  
programme that charts the composer's  
journey, 'a fascinating and enlightening  
glimpse into Bruckner's workshop' –  
from the *Volksfest* Finale, which has  
never been professionally performed  
in the UK, to the original Scherzo,  
followed by the premiere of a new  
scholarly edition of the full symphony.

**Bruckner**  
Discarded Scherzo (1876) and  
Discarded Finale, 'Volksfest' (1878)  
from Symphony No 4,  
ed Benjamin-Gunnar Cohrs  
*Interval*  
Symphony No 4, 'Romantic' (1878–81),  
ed Benjamin-Gunnar Cohrs\*

**Sir Simon Rattle** conductor

\* World premiere of new edition by Benjamin-Gunnar  
Cohrs, Anton Bruckner Urtext Gesamtausgabe,  
Vienna 2021

## Season Concerts continued



Nicola Benedetti

**Wednesday 6 October** 7–8.30pm  
Barbican

### ARTIST PORTRAIT: ANTOINE TAMESTIT

**Martinů** Rhapsody-Concerto  
for Viola and Orchestra  
*Interval*  
**Shostakovich** Symphony No 1

**Sir Simon Rattle** conductor  
**Antoine Tamestit** viola

**Sunday 10 October** 7–8.30pm  
Barbican

### SHOSTAKOVICH, BOULANGER & DVOŘÁK

**Lili Boulanger** D'un matin de printemps  
**Shostakovich** Violin Concerto No 1  
**Dvořák** The Wild Dove

**Daniel Harding** conductor  
**Nicola Benedetti** violin

**Thursday 14 October** 6.30–7.50pm  
LSO St Luke's

### ARTIST PORTRAIT: ANTOINE TAMESTIT

**Walton** Viola Concerto  
**Brahms** Symphony No 4

**Robin Ticciati** conductor  
**Antoine Tamestit** viola

*Please note venue and start time.  
Limited tickets available.*

**Thursday 28 October** 7–8.20pm  
Barbican

### ARTIST PORTRAIT: ANTOINE TAMESTIT

**Walton** Viola Concerto  
**Brahms** Symphony No 4

**Robin Ticciati** conductor  
**Antoine Tamestit** viola

**Sunday 31 October** 7–8.45pm  
Barbican

### ARTIST PORTRAIT: ANTOINE TAMESTIT

**Jörg Widmann** Viola Concerto  
*Interval*  
**Dvořák** In der Natur  
**Dvořák** The Golden Spinning Wheel

**Daniel Harding** conductor  
**Antoine Tamestit** viola



Antoine Tamestit

**Sunday 7 November** 2.30–3.30pm  
Barbican

### LSO DISCOVERY FAMILY CONCERT: FANTASTIC FOLK

A fun, informative concert for families. Immerse yourself in the rhythms and melodies of folk music and learn how composers used these tunes in their own music.

*Suitable for 7- to 12-year-olds*

**Lucy Hollins** presenter

*Please note, all finish times are approximate. Please check [iso.co.uk](http://iso.co.uk) in the week before the concert for more information.*

**Wednesday 10 November** 6.30–7.30pm  
Barbican

### HALF SIX FIX: EROICA

6

A different way to experience the LSO, with introductions to the music from the conductor, a relaxed atmosphere, and digital programme notes.

**Beethoven** Symphony No 3, 'Eroica'

**François-Xavier Roth** conductor

**Thursday 11 November** 7–9.15pm  
Barbican

### GOSSEC, SAINT-SAËNS & BEETHOVEN

**Gossec** Symphonie à 17 parties  
**Saint-Saëns** Piano Concerto No 2  
*Interval*

**Beethoven** Symphony No 3, 'Eroica'

**François-Xavier Roth** conductor  
**Bertrand Chamayou** piano

## Season Concerts continued



Soweto Kinch

**Friday 19 November** 7.30–8.55pm  
**Barbican**

### LSO / EFG LONDON JAZZ FESTIVAL SOWETO KINCH: WHITE JUJU

The world premiere of Soweto Kinch's new work for orchestra, written in response to the Black Lives Matter movement, Black British history and the past 18 months of lockdown

**Soweto Kinch** White Juju (world premiere)\*

**Lee Reynolds** conductor  
**Soweto Kinch** saxophone & vocals

Part of the EFG London Jazz Festival

## SERIOUS

\*Commissioned by Serious and the London Symphony Orchestra, supported as a part of **Help Musicians UK's** Giant Steps scheme and **Cockayne Grant for the Arts**.

**Thursday 25 November** 7–9pm  
**Barbican**

### SALLY BEAMISH DISTANS

**Sally Beamish** Distans: Double Concerto for Violin and Clarinet (UK premiere)\*

*Interval*

**Prokofiev** Romeo and Juliet – Suite

**Gianandrea Noseda** conductor  
**Janine Jansen** violin  
**Martin Fröst** clarinet

\* Commissioned by the Concertgebouworkest, Swedish Radio Symphony Orchestra, London Symphony Orchestra and Oslo Philharmonic Orchestra.

**Sunday 28 November** 3–5pm  
**Barbican**

### A CHORAL WINTER CELEBRATION

A choral celebration to kick-start the festive season, featuring the LSO's family of singers.

**Simon Halsey** conductor  
**London Symphony Chorus**  
**LSO Musicians**

Generously supported by the John S Cohen Foundation.



Lucy Crowe

**Wednesday 8 December** 6.30–7.30pm  
**Barbican**

### HALF SIX FIX: MAHLER

A different way to experience the LSO, with introductions to the music from the conductor, a relaxed atmosphere, and digital programme notes.

**Mahler** Symphony No 4

**Sir Simon Rattle** conductor  
**Lucy Crowe** soprano

*Please note, all finish times are approximate. Please check [iso.co.uk](http://iso.co.uk) in the week before the concert for more information.*

**Thursday 9 December** 7–8.30pm  
**Barbican**

### RÓZSA AND BARTÓK

**Rózsa** Violin Concerto

*Interval*

**Bartók** Concerto for Orchestra

**Sir Simon Rattle** conductor  
**Roman Simovic** violin

**Wednesday 15 December** 6.30–7.30pm  
**Barbican**

### HALF SIX FIX CONCERTO FOR ORCHESTRA

A different way to experience the LSO, with introductions to the music from the conductor, a relaxed atmosphere, and digital programme notes.

**Bartók** Concerto for Orchestra

**Sir Simon Rattle** conductor

**Thursday 16 December** 7–9pm  
**Barbican**

### DEBUSSY, BERLIOZ & MAHLER

**Debussy** Music for King Lear

**Berlioz** Overture: King Lear

*Interval*

**Mahler** Symphony No 4

**Sir Simon Rattle** conductor  
**Lucy Crowe** soprano

# BBC Radio 3 Concerts at LSO St Luke's



Jean-Efflam Bavouzet



Trio Karenine

## HAYDN PLUS

Soloists and ensembles tease out the wit, warmth and wisdom of Haydn's music, pairing his greatest chamber works with pieces that bear the traces of his influence.

**Friday 17 September 1-2.15pm** **Friday 1 October 1-2.15pm**

**Haydn** Sonata in A-flat No 31  
**Clementi** Sonata in A major Op 50 No 1  
**Liszt** Grosses Konzertsolo

**Jean-Efflam Bavouzet** piano

**Haydn** Piano Trio in A major  
**Schubert** Notturmo  
**Korngold** Piano Trio in D major

**Trio Karenine**

**Friday 17 September 6-7.15pm** **Friday 1 October 6-7.15pm**

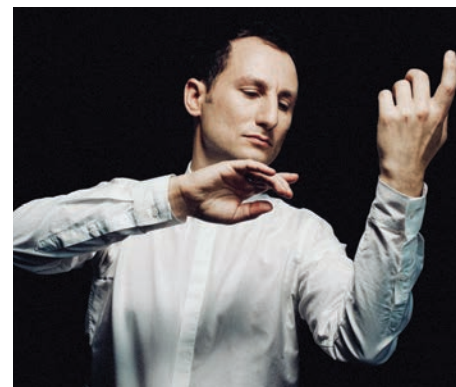
**Haydn** O Tuneful Voice; The Spirit's Song;  
 The Sailor's Song; Ein kleines Haus;  
 Geistliches Lied; Das Leben ist ein Traum  
**Hummel** Loyalty of the Highlanders to  
 their Prince; Despondency on the Return  
 of Spring; The Peasant Courting his Lass  
**Schubert** Die Sterne; Jägers Liebeslied;  
 Fischerweise

**Haydn** String Quartet Op 76 No 2, 'Fifths'  
**Beethoven** String Quartet No 1

**Aris String Quartet**

*Please note start times.*

**Ashley Riches** baritone  
**Joseph Middleton** piano



Antoine Tamestit

## ANTOINE TAMESTIT & FRIENDS

In tandem with his Artist Portrait series with the LSO, the charismatic viola soloist Antoine Tamestit curates a complementary chamber music series with a cast of his closest musical friends.

**Friday 8 October 1-2.15pm**

**Tristan Murail** C'est un jardin secret ...  
**Tansy Davies** Dark Ground  
**Carter** Figments IV & V  
**Bethan Morgan-Williams** Dog in the Moon  
 (world premiere)  
**Berio** Naturale for viola, percussion  
 and tape

**Antoine Tamestit** viola  
**Colin Currie** percussion

**Friday 15 October 1-2.15pm**

**Bruch** Eight Pieces for Clarinet, Viola  
 and Piano Op 83 Nos 2, 4, 5 & 6  
**Jörg Widmann** Fantasie  
**György Kurtág** Hommage à  
 Robert Schumann Op 15d  
**Mozart** Trio for Clarinet, Viola and Piano  
 in E-flat major K498, 'Kegelstatt'

**Antoine Tamestit** viola  
**Jörg Widmann** clarinet

**Friday 15 October 6-7.15pm**

**J S Bach** Cello Suites Nos 1, 2 & 3

**Antoine Tamestit** viola

**Friday 29 October 1-2.15pm**

*Programme to include*  
**Bartók** String Quartet No 3  
**Mozart** String Quintet No 3 in C major K515

**Antoine Tamestit** viola  
**Arod Quartet**

All concerts will be recorded by  
 BBC Radio 3 for future broadcast.

## LSO Discovery Events at LSO St Luke's



Rachel Leach

**Friday 10 September 12.30–1.15pm**  
**22 October; 19 & 26 November**

### FREE FRIDAY LUNCHTIME CONCERTS

Free, 45-minute, informal concerts at LSO St Luke's, with introductions from presenter Rachel Leach. Visit [iso.co.uk/freefridays](http://iso.co.uk/freefridays) for full details.

**Saturday 6 November 10.30–11.15am**  
**12.30–1.15pm**

### MUSICAL STORYTELLING

*For under-5s*

LSO musicians retell a popular children's story through music. Dance and sing as the instruments bring the tale to life.

### LSO JERWOOD COMPOSER+

Composers Des Oliver and Hollie Harding curate two evenings of contemporary and new music, performed by LSO musicians.

### JERWOOD ARTS

Generously supported by Jerwood Arts

**Saturday 23 October 7.30–9.30pm**

### THE DIASPORIC QUARTETS

*Curated by Des Oliver*

**Saturday 13 November 7.30–9.30pm**

### FERAL: ENCHANTMENT ON THE FRONTIERS OF REWILDING

*Curated by Hollie Harding*

**Saturday 27 November 6–8pm**

### LSO EAST LONDON ACADEMY SHOWCASE

The LSO East London Academy proudly presents an evening of music played by talented young musicians from East London.

Generously supported by the Henocq Law Trust, The Steel Charitable Trust, The Irving Memorial Trust, the Harold Hyam Wingate Foundation and The Radcliffe Trust.

# BOOKING

## BOX OFFICE

[iso.co.uk](http://iso.co.uk)

## TICKET PRICES

### CONCERTS AT THE BARBICAN

#### LSO SEASON CONCERTS

£60 £48 £35 £24 £18 (£15/£10 Wildcards)

+ booking fee per transaction of £3 online or £4 by phone (no fees when booked in person)

#### HALF SIX FIX CONCERTS

£35 £24 £18 (£15/£10 Wildcards)

+ fees as above

#### LSO/SOWETO KINCH

£35 £24 £18 (£15/£10 Wildcards)

+ fees as above

#### A CHORAL WINTER CELEBRATION

£35 £24 £18 £15 (£15/£10 Wildcards)

+ fees as above

#### FAMILY CONCERT

£16 £12 £10 adults, £5 under-18s

+ fees as above

## CONCERTS AT LSO ST LUKE'S

### LSO SEASON CONCERTS

£35

+ booking fee per transaction of £0.60 online or £0.70 by phone

### BBC RADIO 3 LUNCHTIME & EARLY EVENING CONCERTS

£15 (£13 concessions) + fees as above

### JERWOOD COMPOSER+ CONCERTS

£8 (£6 concessions) + fees as above

### MUSICAL STORYTELLING

£7 adults, £5 children, under 12 months free + fees as above

### LSO EAST LONDON ACADEMY SHOWCASE

£8 (£6 concessions), £5 under-18s

### LSO DISCOVERY FREE FRIDAY LUNCHTIME CONCERTS

Free; visit [iso.co.uk/freefridays](http://iso.co.uk/freefridays) for the latest information about Autumn performances.

*Discount information on pages 14 and 15*

## DISCOUNTS FOR LSO SEASON CONCERTS

### MULTIBUY DISCOUNTS

Save on tickets by booking three or more autumn concerts at the same time, when buying the same number of tickets for each performance (excludes Family Concert).

#### Vivace

Book 7 or more concerts and **save 40%**

#### Allegro

Book 5–6 concerts and **save 30%**

#### Moderato

Book 3–4 concerts and **save 20%**

Book before 12 September and you will also receive the same saving on any further top-up bookings you make (see below).

Book at Vivace or Allegro levels and receive additional benefits:

- 20% discount on BBC Radio 3 Concerts
- 20% discount on LSO Live recordings

[iso.co.uk/multibuy](https://www.iso.co.uk/multibuy)

### TOP-UP DISCOUNTS

**Book any autumn multibuy package** before 12 September and receive the same 20%, 30% or 40% discount when booking any additional concerts in the 2021/22 season.

**Book two autumn concerts** at the same time and receive a 20% discount when booking additional concerts from the remainder of the 2021/22 season (January to June 2022).

*Higher multibuy discounts will still be applied if booking the required number of concerts at the same time, and the higher discount then applied to any further top-up bookings made.*

### WILDCARD TICKETS

#### £10/£15 + £3 booking fee per transaction.

Guaranteed entry to the concert – however, your seat will only be allocated on the day of the performance. You could be placed anywhere in the Hall, in seats worth at least £18. Book early for the best price – following an initial allocation Wildcards may rise in price from £10 to £15.

[iso.co.uk/wildcards](https://www.iso.co.uk/wildcards)

*Online booking only. Tickets subject to availability, max 2 per person. Cannot guarantee that 2 tickets purchased at the same time will be seated next to each other. Not available for Family Concerts or concerts at LSO St Luke's.*

### YOUNG PEOPLE

#### Under-18s

£5 for under-18s at all concerts.

#### Students

£9 student tickets available on selected concerts through Student Pulse.

#### 14–25s: Young Barbican

Discounted tickets for young people are available to selected Barbican concerts.

[iso.co.uk/otherdiscounts](https://www.iso.co.uk/otherdiscounts)

### GROUPS OF 10+

Groups of 10 or more receive a 20% discount, or 30% for two or more concert bookings. Contact the Box Office Groups Team at [groups@barbican.org.uk](mailto:groups@barbican.org.uk)

[iso.co.uk/groups](https://www.iso.co.uk/groups)

### ACCESSIBILITY

Join the Barbican Access Membership to inform us of your requirements. Members may also be eligible for a 50% discount on tickets for the member and a companion (discount limited and subject to availability).

To book tickets Access Members should email [tickets@barbican.org.uk](mailto:tickets@barbican.org.uk) or call 020 3855 4745 (Mon-Fri 1-4pm).

[barbican.org.uk/access](https://www.barbican.org.uk/access)

### TICKET EXCHANGES & REFUNDS

We offer a flexible exchange service. Tickets can be exchanged for another LSO concert or Barbican credit vouchers valid for six months, provided that you inform the Box Office and return any physical tickets at least 24 hours before the performance (two weeks for group bookings). A per-ticket administration fee applies for all exchange services.

The LSO reserves the right to change artists or programmes if necessary. If the event is cancelled, all bookers will receive a refund.

## FIND US

[iso.co.uk/yourvisit](https://www.iso.co.uk/yourvisit)

### London Symphony Orchestra Barbican Centre

Silk Street, London  
EC2Y 8DS

### LSO St Luke's

161 Old Street, London  
EC1V 9NG

### Underground/Train stations

The Barbican is closest to Moorgate and Barbican, with Liverpool Street, Bank and Farringdon nearby. For LSO St Luke's use Old Street.

### Bus routes

4, 56, 153 Barbican;  
21, 43, 76, 141, 214 Moorgate/City Road;  
55, 243 Old Street.

### Parking

The Barbican's on-site car parks, also convenient for LSO St Luke's, cost £9 from 4pm on weekdays and £9 per day at weekends.

All information correct at time of publishing. All discounts are subject to availability and may not be combined. Box Office calls may be monitored or recorded for quality assurance or training purposes.



You can get this guide in large print,  
audio and digital formats.

Contact 020 7588 1116

or email [tickets@lso.co.uk](mailto:tickets@lso.co.uk)



# lso.co.uk

**LSO Visual Identity & Concept Superunion**

**Cover Photo** Found Studio

**Other Images** Mark Allan, Julien Mignot,  
Simon Fowler, Doug Peters, Harald Hoffman,  
Victoria Cadisch, Benjamin Ealovega,  
Lyodoh Kaneko, Kevin Leighton

The LSO is funded by Arts Council England in partnership with the City of London Corporation, which also provides the Orchestra's permanent home at the Barbican.



Supported using public funding by  
**ARTS COUNCIL  
ENGLAND**



LSO registered charity in England number 232391